

# PosiTector® **DPM**

## Dew Point Meter

**NEW**

**Ideal  
for Outdoor  
and Indoor  
Use**

Measures and records climatic parameters including: Relative humidity, air temperature, surface temperature, dew point temperature and difference between surface and dew point temperatures. Ideal for surface preparation as required by ISO 8502-4.



*Magnetic surface  
temperature probe available  
for hands-free recording*

*The Measure of Quality*

# PosiTector® Dew Point Meter

## A New Level of Confidence for painting contractors & inspectors.

D A T A S E T	
MEASURES	CALCULATES
RH – relative humidity	$T_d$ – dew point temperature
$T_a$ – air temperature	$\Delta$ – the difference between surface and dew point temperatures
$T_s$ – surface temperature	

### Simple

- Large, easy-to-read, graphics LCD with multilingual support
- One-handed menu navigation
- Audio and visual alarm – indicates when climatic conditions are unsuitable for painting
- No need to consult complex tables or use a slide rule calculator
- Bi-color indicator light – ideal in a noisy environment
- All 5 parameters are constantly updated and displayed simultaneously
- Graph mode charts all 5 parameters for quick analysis

### Durable

- Rugged, outdoor/indoor instrument
- Solvent, acid, oil, water and dust resistant – meets or exceeds IP5X
- Scratch/Solvent resistant display suitable for harsh environments
- Shock-absorbing, protective rubber holster with belt clip and wrist strap
- Two (2) year warranty on both body and sensors

### Accurate

- Fast response precision sensors provide accurate, repeatable readings with high reliability and long term stability
- Smart Trend Indicators identify rising, falling or stable readings
- Certificate of Calibration showing traceability to NIST included
- Conforms to national and international standards including ISO 8502-4, BS 7079-B4, and ASTM D3276

### Versatile

- Internal Memory stores 2,500 datasets in 100 batches with the simple touch of a button
- Data Logger Mode automatically records all 5 parameters at user selected time intervals. Ideal for unattended operation.
- Built-in clock – date and time stamps each stored measurement
- Easily converts to accept optional probes including magnetic and hand-held surface temperature probes
- USB and IR ports for downloading to a PC or printer
- Celsius/Fahrenheit switchable
- Backlit display for dim or dark environments

## Tough **NEW** Features

- USB/IR Ports for downloading to a PC or printer

- Solvent, acid, oil, water and dust resistant—meets or exceeds IP5X

- Scratch and solvent resistant lens

### DPM shown in Graph Mode

- Thick impact-resistant Lexan® display

- Bi-color indicator light

- Hi-grade, industrial strength housing

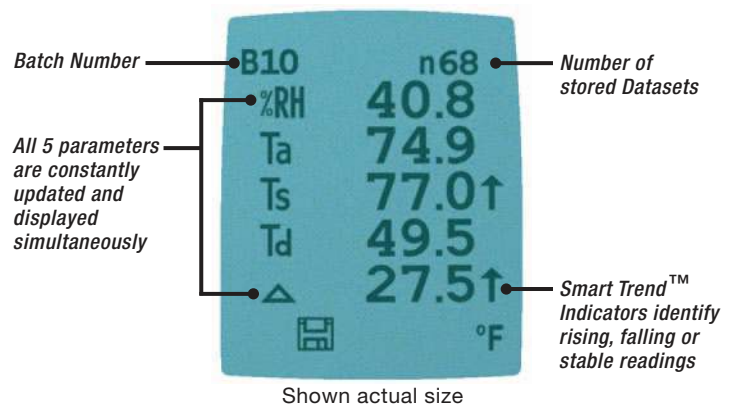
- Shock-absorbing, protective rubber holster with belt clip and wrist strap

- Air temperature and humidity sensor

- Built-in thermocouple surface temperature sensor

- White sensor housing reduces the effect of direct sunlight

### Example of Memory Mode Display



**The PosiTector DPM stores 2,500 datasets.** Individual parameters can be viewed on the LCD, viewed graphically for quick trend analysis on-site, or downloaded to a printer or PC.

40:RH	80.4
04:12 Ta	51.8
Ts	51.7
Td	46.0
△	5.7
41:RH	84.3
04:27 Ta	51.8
Ts	51.6
Td	47.2
△	4.4



### Magnetic Surface Temperature Kit (optional)

allows the instrument and surface temperature probe to be conveniently attached onto steel structures for hands-free recording. Ideal for unattended data logging during the work shift and overnight.

**Interchangeable lower unit** with built-in air temperature/humidity sensor and a K-type thermocouple connector.

**Magnetic Surface Temperature Probe**



**Flip Display** enables right-side-up viewing in any position.



### Kit includes:

- Interchangeable lower unit with built-in air temperature/humidity sensor and a K-type connector that accepts the magnetic surface temperature probe
- Magnetic surface temperature probe with armored cable and locking device to prevent accidental disconnection from the instrument during unattended operation
- Additional rubber holster with magnetic clip to attach the instrument body onto steel structures
- PosiSoft Software and USB cable
- Durable, hard shell carrying case
- Certificate of Calibration
  
- Accepts other optional K-type thermocouple probes including:
  - **Hand-held Surface Temperature Probe** – for spot checking hard-to-reach surfaces
  - **Self-adhering Surface Temperature Probe** – sticks to solid materials including aluminum, wood, concrete, etc. Ideal for unattended monitoring.
  - **Liquid Temperature Probe** – general purpose probe with stainless steel shaft

Specifications	Range	Accuracy	Resolution
Surface Temperature	-40° to 80° C	± 0.5° C	0.1° C
	80° to 190° C	± 1.5° C	
	-40° to 175° F	± 1° F	0.1° F
	175° to 375° F	± 3° F	
Air Temperature	-40° to 80° C	± 0.5° C	0.1° C
	-40° to 175° F	± 1° F	0.1° F
Humidity	0 to 100%	± 3%	0.1%

## Options

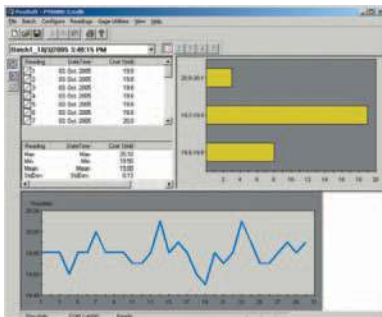
**Magnetic Surface Temperature Kit** – see details on previous page

**Additional Probes** for use with Magnetic Surface Temperature Kit only

- **Hand-held Surface Temperature Probe** for spot checking hard-to-reach surfaces.
- **Self-adhering Surface Temperature Probe** sticks to solid materials including aluminum, wood, concrete, etc. Ideal for unattended monitoring.
- **Liquid Temperature Probe** is a general purpose probe with stainless steel shaft.

**PosiSoft® for Windows® analysis software**

- Downloads stored datasets to a PC
- Allows entry of notes and annotations
- Prints and displays basic charts and histograms
- Exports to a document or spreadsheet
- Includes USB cable
- Free updates



**AC Power Cable** for continuous operation.

**IR Printer** receives data via wireless infrared.



**PosiDew DPM Comes Complete** with humidity, air and surface temperature sensors, protective rubber holster with belt clip and wrist strap, 3 AAA batteries, instructions, nylon carrying case with shoulder strap, Certificate of Calibration traceable to NIST, two (2) year warranty.

**Size:** 178 x 64 x 31 mm (7" x 2.5" x 1.2")

**Weight:** 185 g (6.5 oz.) without batteries

Conforms to ISO 8502-4, BS 7079-B4, and ASTM D3276

